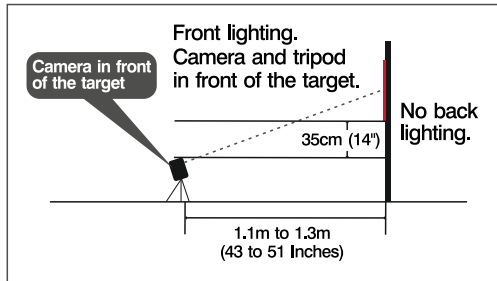


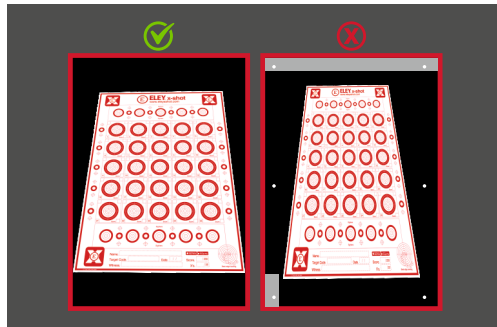
Getting started

www.eleyxshot.com



Camera positioning guide

1. Position the camera approximately 1.3 metres or 51" away from the target.
2. Ensure the camera is less than 35cm or 14" below the bottom of the target.
3. An unobstructed solid matt black background must be placed behind the target, accompanied by adequate front lighting.
4. Please ensure the target is centred in the camera alignment frame as illustrated below.



For instructions
and resources visit:



www.eleyxshot.com

x-shot
CONNECT WITH ELEY, CONNECT WITH THE WORLD®

x-shot

Experience multi-detail scoring
with the first portable, real-time
shot detection device.

www.eleyxshot.com
CONNECT WITH ELEY, CONNECT WITH THE WORLD®

Getting started

www.eleyxshot.com



Step 1.

Press the red button to turn on the ELEY x-shot unit. Two beeps will sound when the unit is ready.



Step 2.

Press the right arrow. Scan the QR code to access the ELEY x-shot app.



Step 3.

Download and install the ELEY x-shot app on to your device. Create an account and sign in.



Step 4.

Press the right arrow again. Scan the QR code to connect to your ELEY x-shot Hub.



Note.

Please note. When you are connected to the ELEY x-shot hub, you may lose any other data connections through your device.



Step 5.

Once connected to your ELEY x-shot hub, launch the ELEY x-shot app.



Step 6.

Click on the get connected button.

Getting started

www.eleyxshot.com



Step 7.

Click on the range setup button.



Step 8.

Remove a camera unit from the hub. Wait for the lane number to disappear. Press and hold the on button located on the side of the camera until the rear screen illuminates.



Step 9.

Screw the ELEY tripod adapter on to the tripod.



Step 10.

Gently screw the camera on to the ELEY tripod adapter. Taking care not to drop the camera unit.



Step 11.

Place your ELEY x-shot target on a safe backstop. Ensure this is matt black in colour and unobstructed. Refer to the camera positioning guide.



Step 12.

Return to the ELEY x-shot app and click on the live Camera button to activate the target positioning screen.

Getting started

www.eleyxshot.com



Step 13.

Position your ELEY tripod so the ELEY target is centered within the red box displayed on your device screen. Refer to the camera positioning guide.



Step 14.

When your target is aligned, click finish. You now have the option to set up additional cameras.



Step 15.

Exit setup and click the practice icon.



Step 16.

Click the camera button that is live on your lane.



Step 17.

Start Shooting. Start/stop timer available. Click the finish and save button when you have completed your target. Connect back to your mobile data to upload your results.



Step 18.

To turn off the ELEY x-shot unit, press the red button, press the left button to scroll across to the power off option and press the centre button.